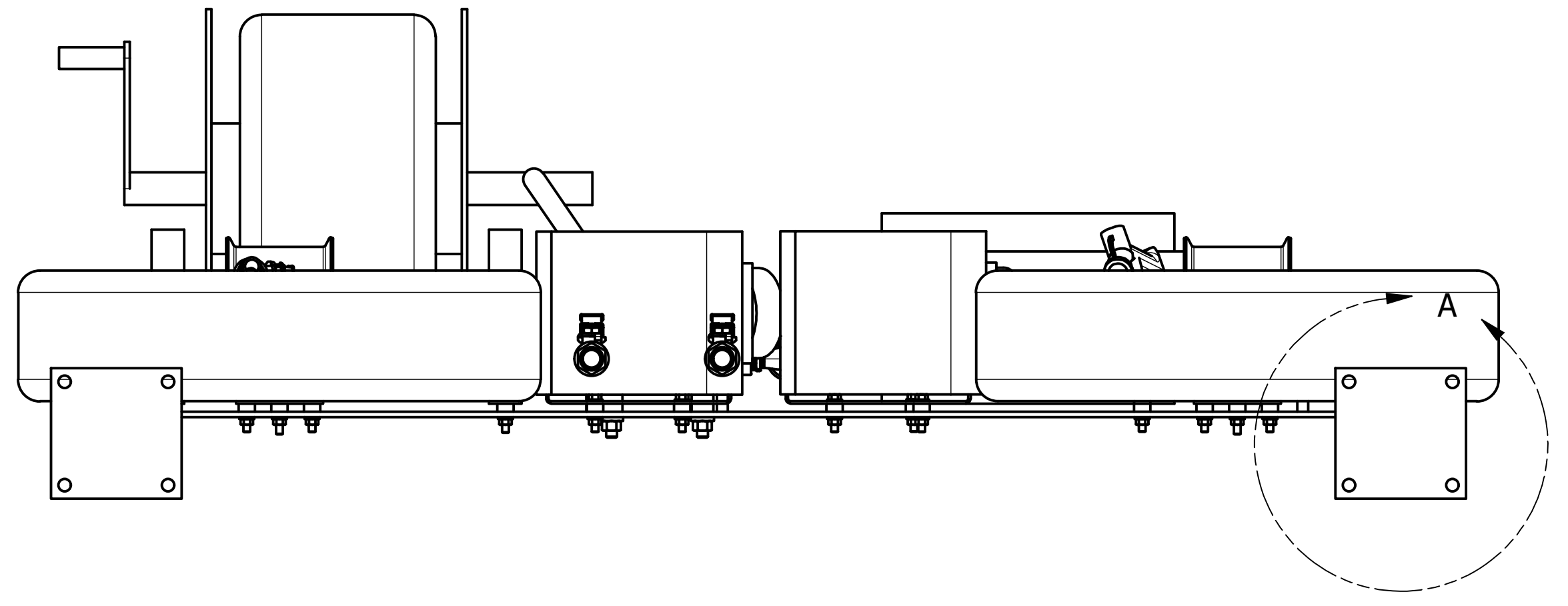
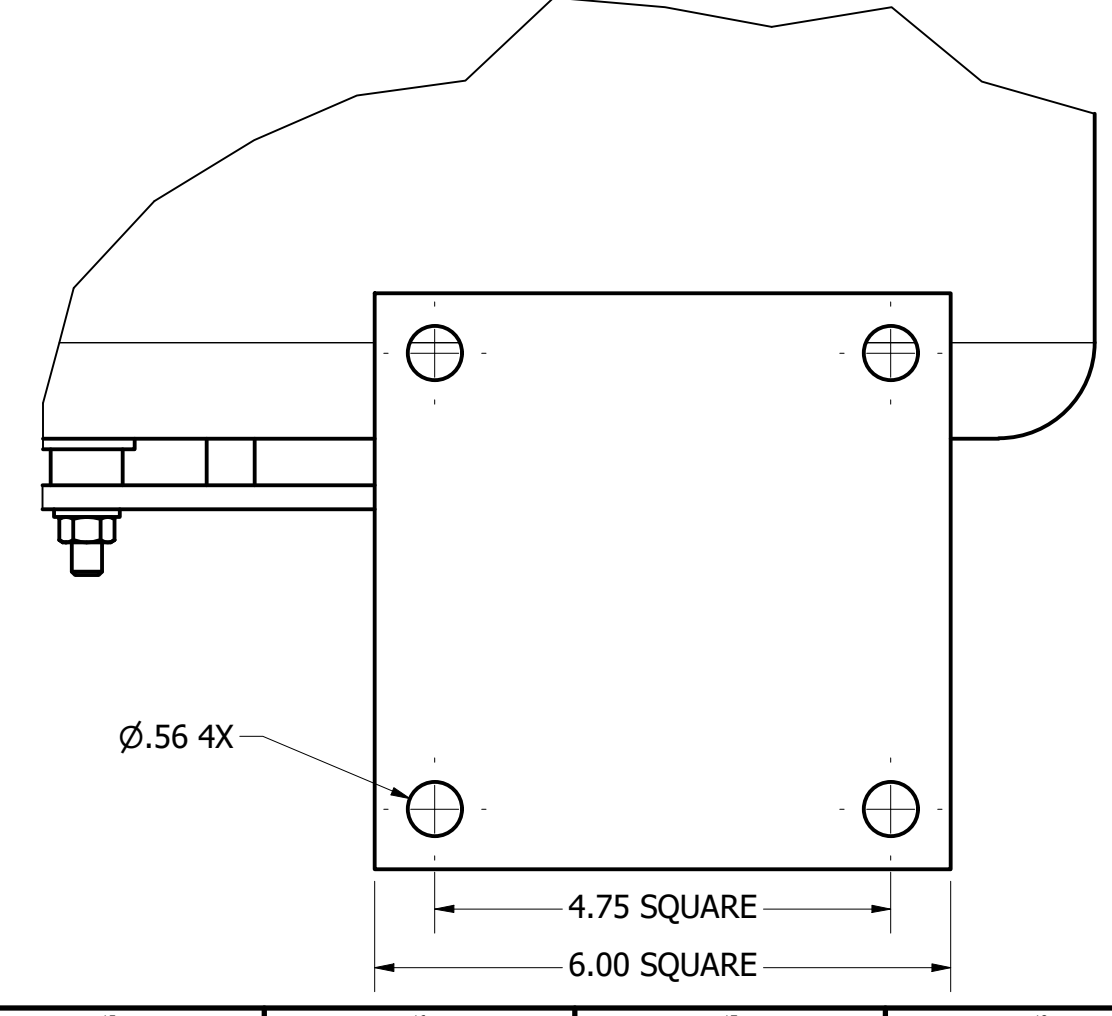


| PARTS LIST | | |
|------------|-----|----------------------------------|
| ITEM | QTY | DESCRIPTION |
| 1 | 1 | CAMOZZI SWIV MALE 90 1/4 X 3/8 |
| 2 | 2 | SPACER NYLON .50X2.25 |
| 3 | 18 | SPACER NYLON .3125X.375 |
| 4 | 1 | HOSE .50 MNPTXFSNPT 40 LEN |
| 5 | 1 | PANEL COMBO STATION, FRAME WLDMT |
| 6 | 1 | PANEL COMBO STATION, WATER ASSY |
| 7 | 1 | PANEL COMBO STATION, AIR ASSY |
| 8 | 1 | FOAM/RINSE/SANITIZE UNIT W/HGR |
| 9 | 1 | SPRAY HOSE ASSEMBLY, 1/2X50FT |
| 10 | 18 | BOLT HEX HEAD 304 .31-18X1.5 |
| 11 | 2 | BOLT HEX HEAD 304 0.5-13X4 |
| 12 | 18 | NUT HEX 304 .313-18 |
| 13 | 2 | NUT HEX 304 .50-13 |
| 14 | 1 | HOSE .50 MNPTXMNPT 34 LEN |
| 15 | 36 | WASHER FLAT 304 .313 |
| 16 | 4 | WASHER FLAT 304 0.5 |
| 17 | 2 | 2.5 GAL CHEM BOTL W/CAP AND RACK |
| 18 | 1 | HANNAY SS1500 SERIES MANUAL REEL |
| 19 | 1 | PLASTIC POLY FLOW TUBING .25 |



DETAIL A



Sterling
 Process Equipment and Services, Inc.
 333 McCormick Blvd
 Columbus, Ohio 43213-1526
 Ph: (614) 868-5151 (800) 783-7875
 www.sterlingpe.com sales@sterlingpe.com

UTILITY STATIONS
 PANEL COMBO STATION ASSY

| | |
|------------------|--------------------|
| Project Mgr: JJM | Drawn By: nkojczyk |
| Checked By: | Scale: NTS |
| Date: 3/12/2021 | Job No.: |
| Sheet 1 | Of 1 |
| Rev. 1 | |

The information, data and drawings embodied in this document are the ownership of Sterling Process Engineering and Services, Inc. Understanding that they will not be disclosed to third parties without prior written consent of Sterling Process Engineering and Services, Inc.

Dwg. No. C0013-05-0000